



# Model RVS32

## ASME SAFETY VALVE

(10322 Series)

Job Name:	Contractor:
Job Location:	P.O. Number:
Engineer:	Representative:
Tag:	Wholesale Distributor:

### DESCRIPTION

ASME Section VIII design certified Safety Valve to protect portable steam vessel applications such as autoclaves, sterilizers and pressure cookers against excess pressure build-up. Made from proven ASTM grade Brass with optional decorative chrome finish.

### FEATURES

- National Board (NB) Certified Capacity
- 15-60 psig Pressure Range
- Corrosion Resistant Construction
- Chrome Plate Finish Option
- Directive 97/23/EC (PED) Compliance Available
- MADE IN THE USA



### MATERIALS

Body: ASTM B16 Brass  
 Nozzle: ASTM B62 Bronze  
 Spring: Stainless Steel  
 Seat: Steam grade EPDM (Standard)

### OPTIONS

- Chrome Plated
- CE = PED compliant
- EPDM Seat  Viton Seat  Silicone Seat
- Set pressure (15-60, psig)

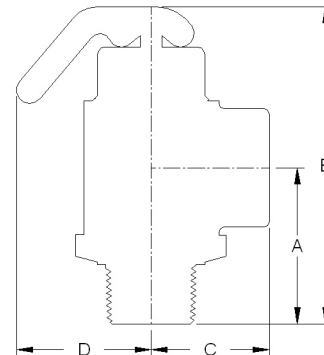
### CAPACITY

SET PRESSURE PSIG (bar)	10-322 CAPACITY Lb/Hr (Kg/Hr)
20 (1.38)	325 (147)
25 (1.72)	375 (170)
30 (2.07)	425 (193)
35 (2.41)	475 (215)
40 (2.76)	525 (238)
45 (3.10)	575 (261)
50 (3.45)	625 (284)
55 (3.79)	675 (306)
60 (4.14)	725 (329)

### DIMENSIONS

Model #	Series #	SIZE	A	B	C	D
RVS32	10322	3/4M x 3/4F	1.81 (46)	3.69 (94)	1.38 (35)	1.56 (40)

All dims in inches (mm)



### APPROVALS



ASME Section VIII Div 1 (10322)  
 Canadian Registration Number 0G8547.5C  
 \*PED compliance upon request



Conbraco Industries, Inc. 701 Matthews Mint Hill Rd. Matthews NC 28105 USA ; [www.apollovalves.com](http://www.apollovalves.com) ; 704-841-6000

This specification is provided for reference only. Conbraco reserves the right to change any portion of this specification without notice and without incurring obligation to make such changes to Conbraco products previously or subsequently sold.