

# CONBRACO INTERNATIONAL

## SUBMITTAL SHEET

### LEAD FREE

## 94VLF Series

Press End Brass Ball Valve



<b>Job Name:</b>	
<b>Job Location:</b>	
<b>Engineer:</b>	
<b>Contractor:</b>	
<b>Tag:</b>	
<b>PO Number:</b>	
<b>Representative:</b>	
<b>Wholesale Distributor:</b>	

### DESCRIPTION

The CONBRACO™ INTERNATIONAL 94VLF Series Lead Free\* two-piece press ball valve is ideal for installation in most plumbing and heating systems, including potable water.

### FEATURES

- Lead Free\*, ANSI 3rd Party Certified
- Full-Port Flow
- PTFE Seats and Packing
- Adjustable Stem Packing
- Ridgid® XL Press Tool Jaw Compatible (1/2" – 2")
- Ridgid® XLC Press Tool Jaw Compatible (2-1/2" - 4")
- Corrosion Resistant Materials
- 100% Factory Tested
- 2 year Warranty

### PERFORMANCE RATING

- Maximum Operating Pressure 250 psig
- Temperature Range: 0°F - 250°F

### APPROVALS

- MSS SP-110 Ball Valves
- NSF/ANSI 61 Section 8
- NSF/ANSI 372 - 3rd party certified
- IAPMO IGC-157-2013 Ball Valves

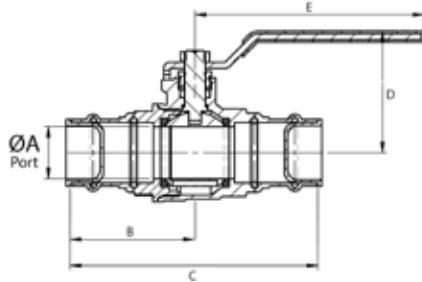
### APPROVED APPLICATIONS

- Water including Potable Water
- Hydronic Heating (90% glycol max)
- Not suitable for flammable gas service
- Designed for direct mechanical connection to ASTM B88-Type K, L, and M copper tubing in the hard drawn condition.
- Not compatible with soft annealed copper tubing.

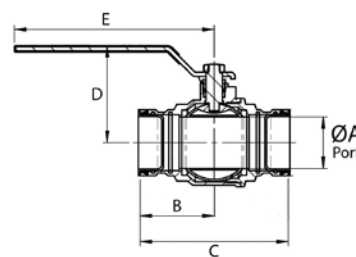
### STANDARD MATERIALS LIST

Part Name	Material
Body	Lead Free Brass
Retainer	Lead Free Brass
Ball	1/4" – 1": Lead Free Brass (Chrome Plated) 1-1/4" – 4": Stainless Steel
Stem Packing	PTFE
Handle Nut	Steel, Plated
Washer	PTFE
Stem	1/2" – 1": Lead Free Brass 1-1/4" – 4": Brass
Seat	PTFE
Handle	Plated Steel / Insulated Polyvinyl
Gland Nut	Std. Rod Brass
O-Ring Seals	EPDM

1/2" – 2"



2-1/2" – 4"



### DIMENSIONS

Model Number	Size (in.)	Dimensions										Wt. (lbs.)	Carton Qty.
		A (in.)	A (mm)	B (in.)	B (mm)	C (in.)	C (mm)	D (in.)	D (mm)	E (in.)	E (mm)		
94VLF-103-01	1/2"	.50	14.5	1.87	47.5	3.75	95	1.65	42	1.18	30	0.5	50
94VLF-104-01	3/4"	.75	19	2.23	56.7	4.46	113.4	1.91	48.5	1.48	37.5	1	40
94VLF-105-01	1"	1.00	25	2.34	59.5	4.69	119	2.28	58	1.85	47	1.1	20
94VLF-106-01	1-1/4"	1.25	32	2.81	71.5	5.63	143	2.76	70	2.44	57	1.9	20
94VLF-107-01	1-1/2"	1.50	39	2.96	75.3	5.93	150.6	2.95	75	2.72	69	2.4	16
94VLF-108-01	2"	2.00	50	3.50	89	7.01	178	3.50	89	3.41	86.5	4.2	8
94VLF-109-01	2-1/2"	2.50	62	3.50	89	7.01	178	4.61	117	4.17	106	7.8	1
94VLF-100-01	3"	3.00	74.00	3.88	103.50	8.15	207.00	4.96	126.00	4.88	124.00	11.20	1.00
94VLF-10A-01	4"	4.00	98.50	4.98	126.50	9.96	253.00	5.91	150.00	6.30	160.00	21.20	1.00

Apollo Valves / Conbraco Industries, Inc.

701 Matthews Mint-Hill Road, Matthews, NC 28105 USA

www.apollovalves.com | (704) 841-6000

\* LEAD FREE: The wetted surfaces of this product shall contain no more than 0.25% lead by weighted average. Complies with CA AB1953, VT Act 193, MD HB372, LA HB471 and Federal Public Law 111-380. ANSI 3rd party approved and listed.

This specification is provided for reference only. Conbraco Industries Inc. reserves the right to change any portion of this specification without notice and without incurring obligation to make such changes to Conbraco products previously or subsequently sold. Please visit our website @ www.apollovalves.com for the most current information.

